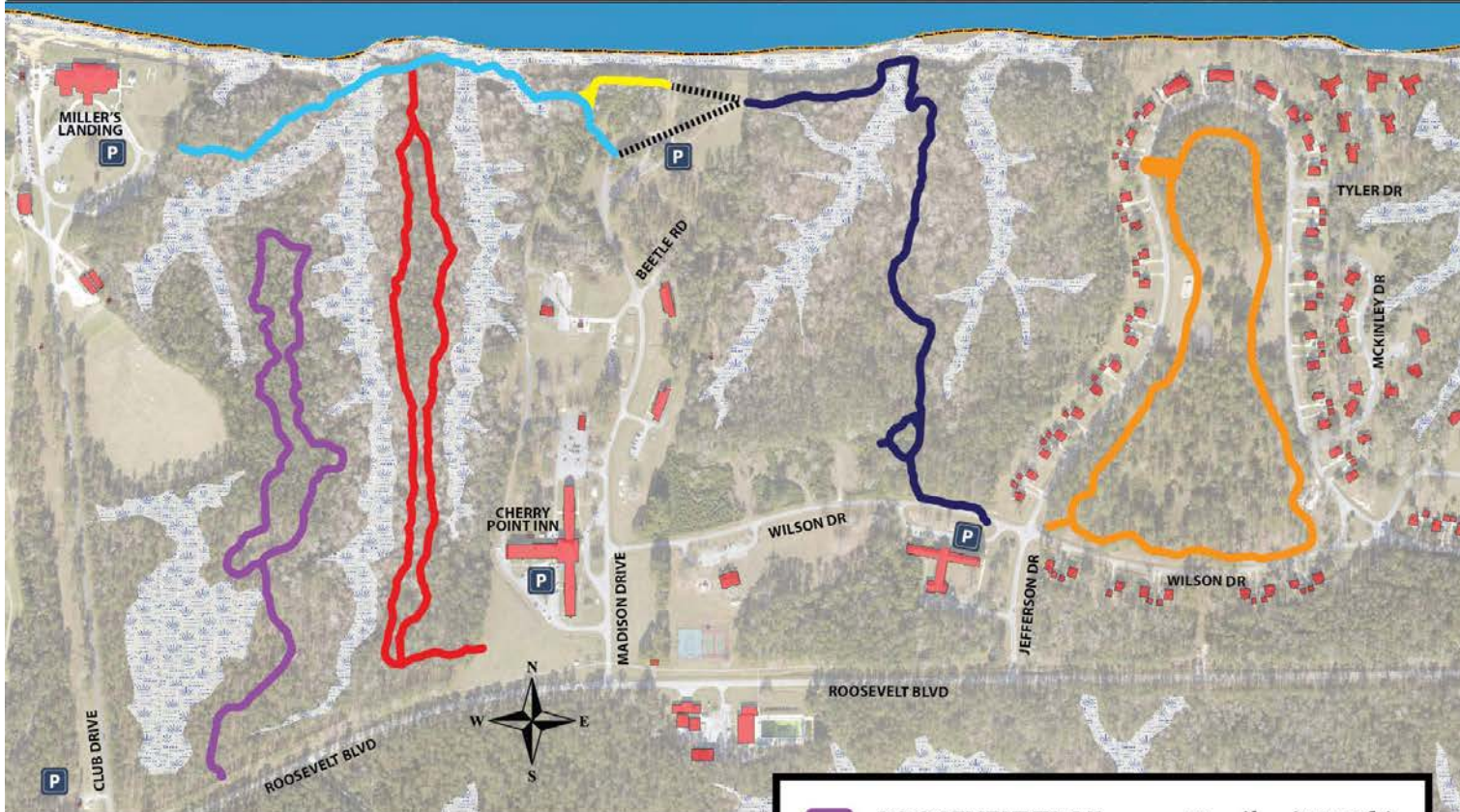


CHERRY POINT TRAIL SYSTEM

Brought to you by MCCS & Public Works



	ROOSEVELT TRAIL	.91 miles (4840 ft)
	MADISON TRAIL	1.05 miles (5564 ft)
	RIVERVIEW TRAIL	.4 miles (2145 ft)
	DOG BEACH	.15 miles (813 ft)
	WILSON TRAIL	.68 miles (3639 ft)
	JEFFERSON LOOP	.95 miles (5010 ft)



Emergencies: Call 911
Maintenance Issues: Call 252-466-3482

FOR MORE
INFORMATION
ON OUR TRAILS



READY
CHERRY
POINT



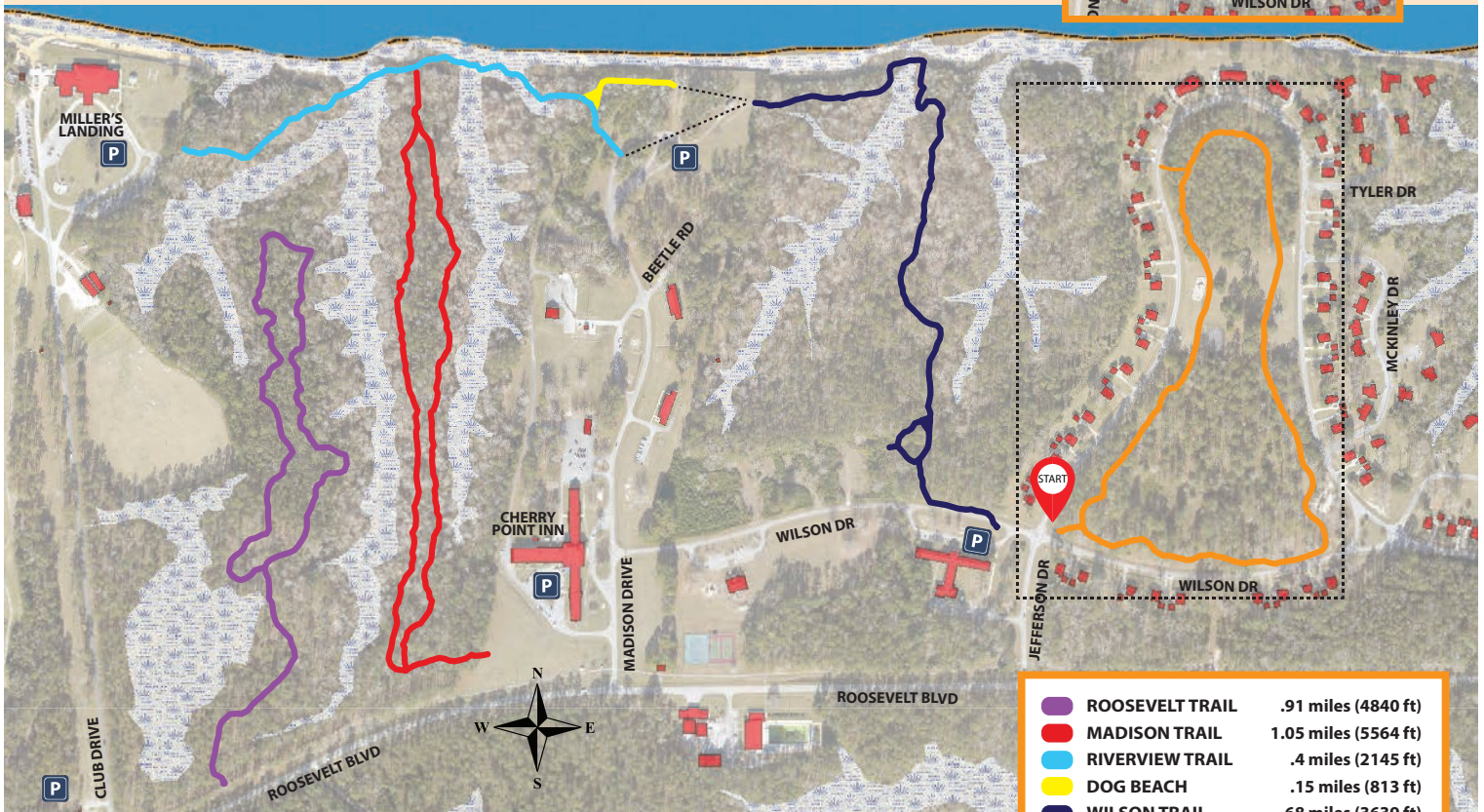
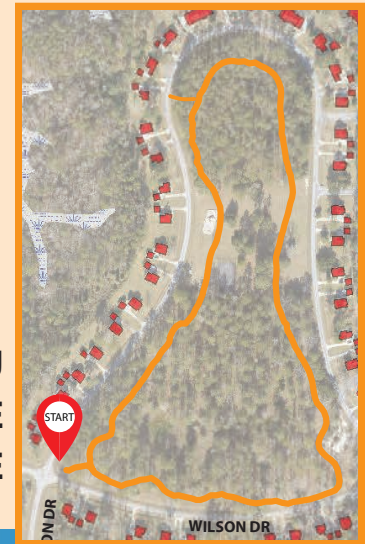
JEFFERSON LOOP TRAILHEAD

.95 miles of level mulched terrain that loops through the Grants Landing neighborhood



Brought to you by MCCS & Public Works

YOU
ARE
HERE



	ROOSEVELT TRAIL	.91 miles (4840 ft)
	MADISON TRAIL	1.05 miles (5564 ft)
	RIVERVIEW TRAIL	.4 miles (2145 ft)
	DOG BEACH	.15 miles (813 ft)
	WILSON TRAIL	.68 miles (3639 ft)
	JEFFERSON LOOP	.95 miles (5010 ft)

CHERRY POINT TRAIL SYSTEM

Emergencies: Call 911

Maintenance Issues: Call 252-466-3482

FOR MORE
INFORMATION
ON OUR TRAILS



READY
CHERRY
POINT

MADISON TRAILHEAD

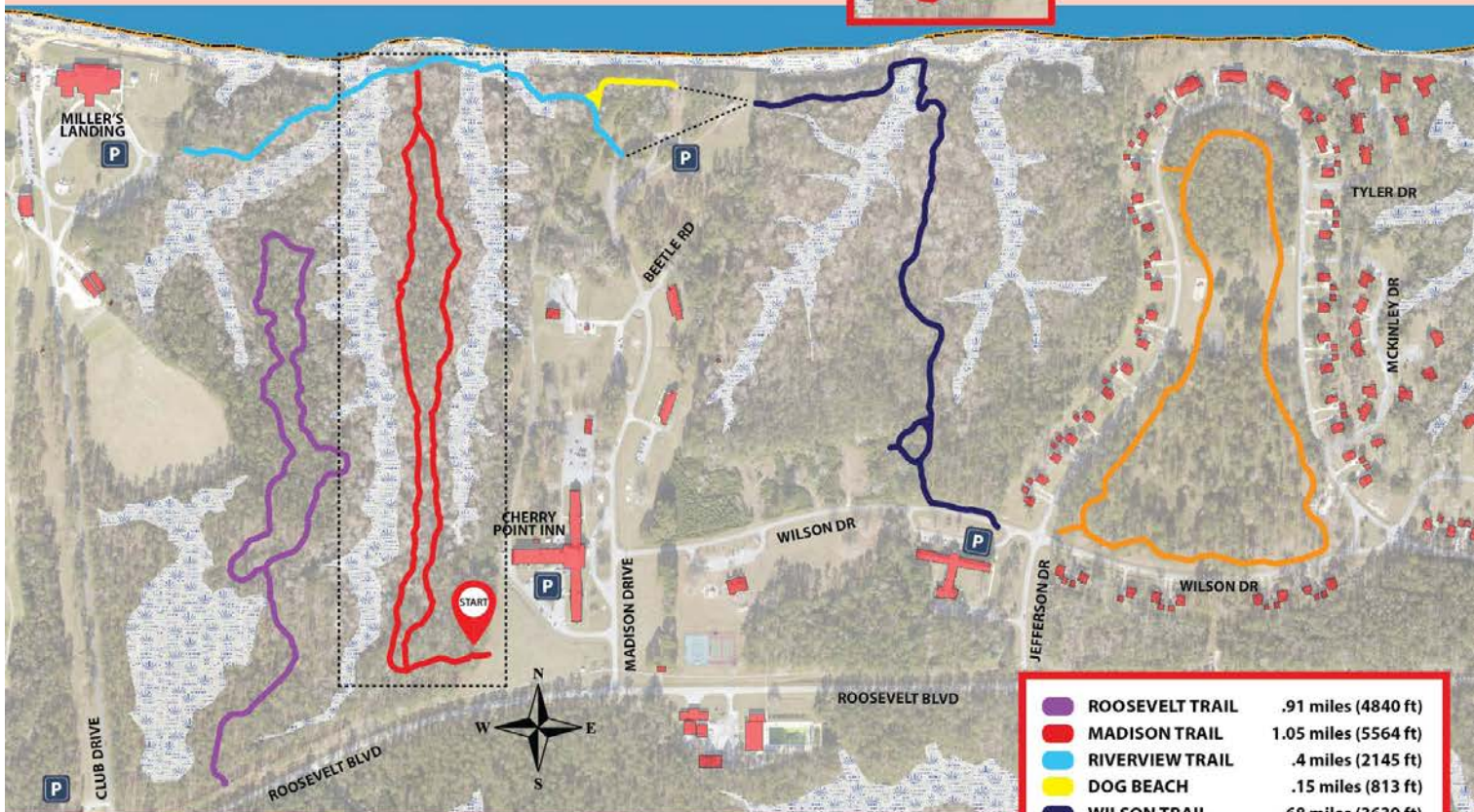
1.05 miles of level natural terrain
 nestled in between wetlands
 Connects to all trails except Roosevelt



Brought to you by MCCS & Public Works



YOU
 ARE
 HERE



	ROOSEVELT TRAIL	.91 miles (4840 ft)
	MADISON TRAIL	1.05 miles (5564 ft)
	RIVERVIEW TRAIL	.4 miles (2145 ft)
	DOG BEACH	.15 miles (813 ft)
	WILSON TRAIL	.68 miles (3639 ft)
	JEFFERSON LOOP	.95 miles (5010 ft)

CHERRY POINT TRAIL SYSTEM

Emergencies: Call 911
 Maintenance Issues: Call 252-466-3482

FOR MORE
 INFORMATION
 ON OUR TRAILS



READY
 CHERRY
 POINT



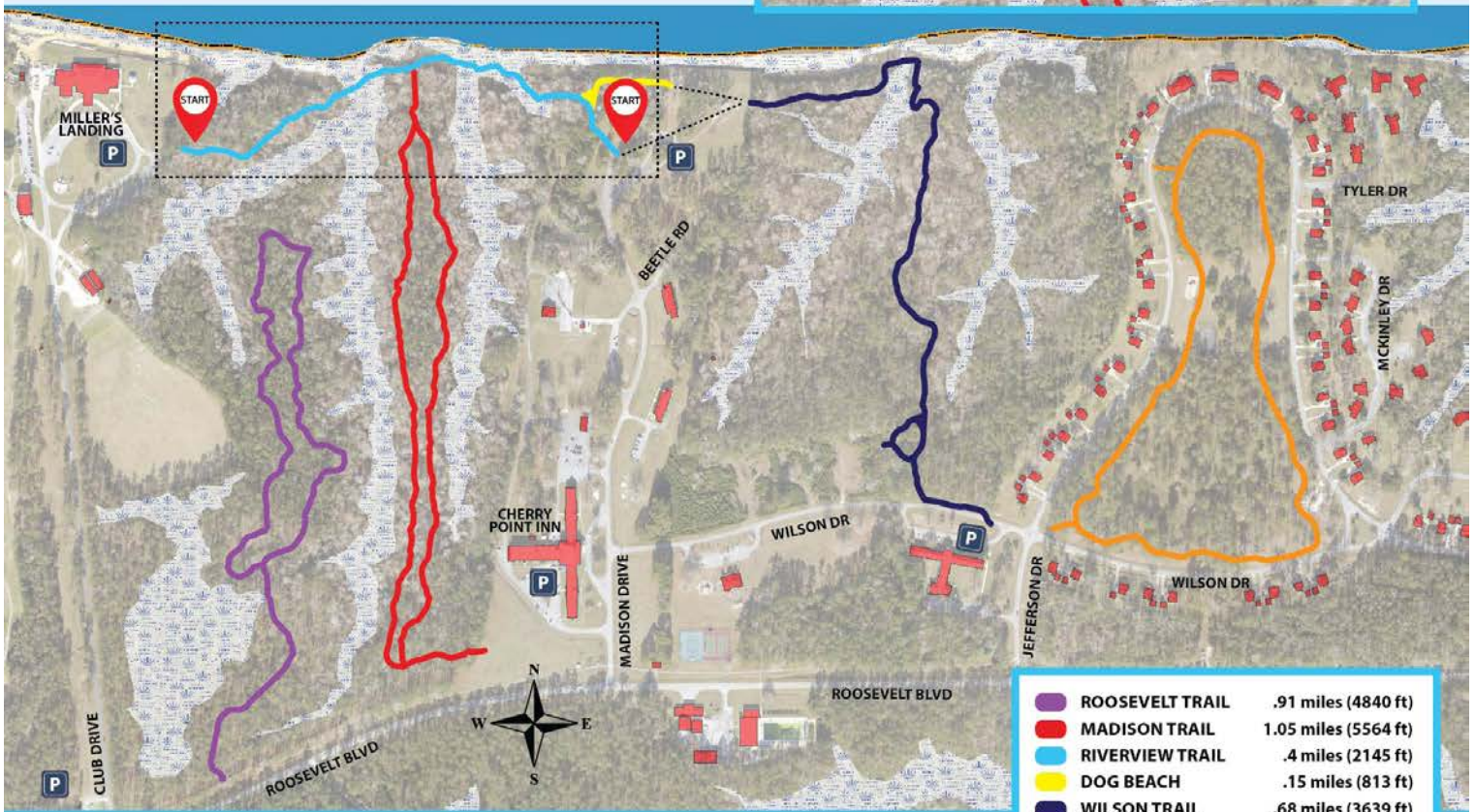
RIVERVIEW TRAILHEAD

.4 miles of level mulched terrain with views of the Neuse River
Connects to all trails except Roosevelt



Brought to you by MCCS & Public Works

YOU ARE HERE



CHERRY POINT TRAIL SYSTEM

Emergencies: Call 911
Maintenance Issues: Call 252-466-3482

FOR MORE INFORMATION ON OUR TRAILS



READY CHERRY POINT

ROOSEVELT TRAILHEAD

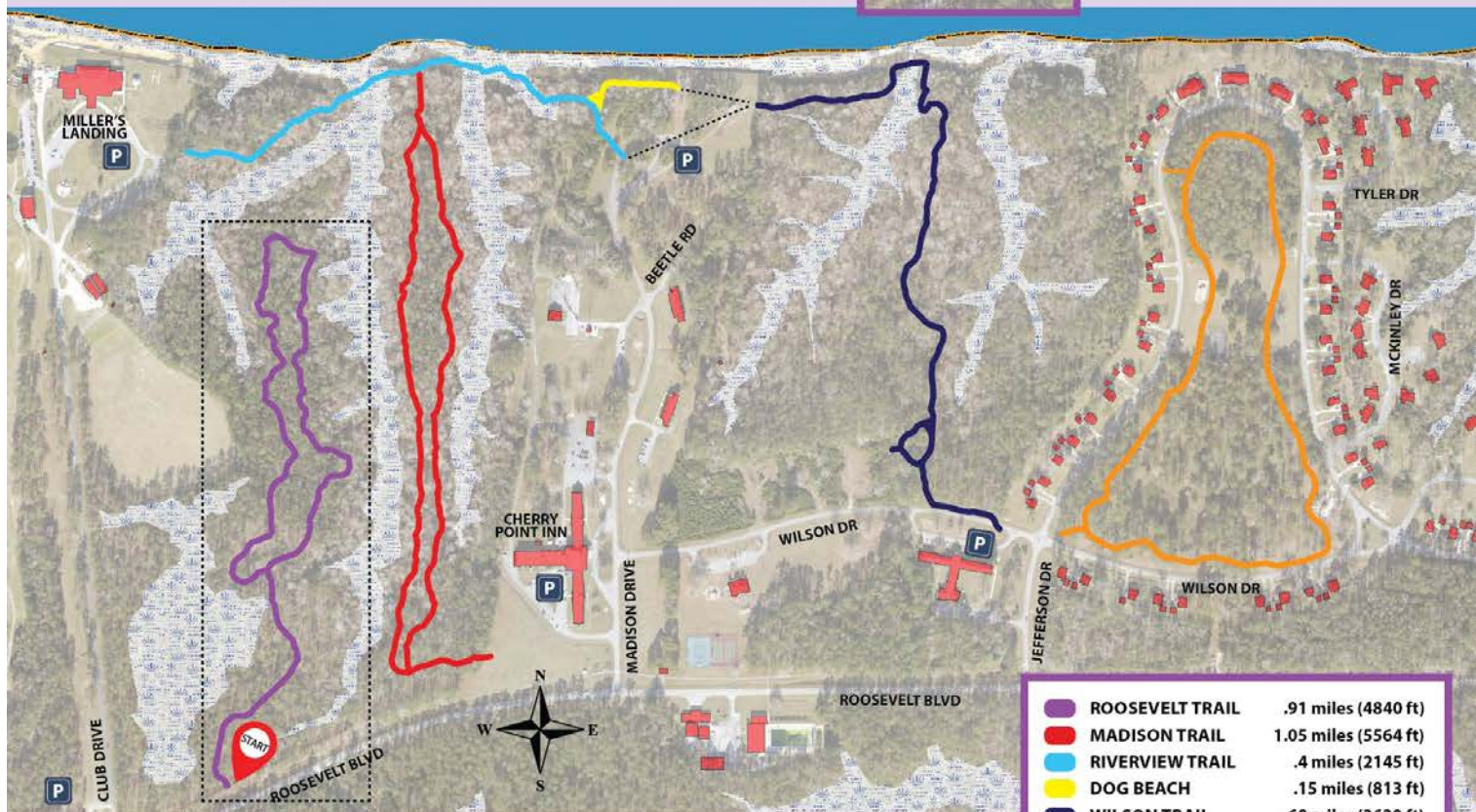
.91 miles of level mulched terrain nestled in between wetlands



Brought to you by MCCS & Public Works



YOU ARE HERE



	ROOSEVELT TRAIL	.91 miles (4840 ft)
	MADISON TRAIL	1.05 miles (5564 ft)
	RIVERVIEW TRAIL	.4 miles (2145 ft)
	DOG BEACH	.15 miles (813 ft)
	WILSON TRAIL	.68 miles (3639 ft)
	JEFFERSON LOOP	.95 miles (5010 ft)

CHERRY POINT TRAIL SYSTEM

Emergencies: Call 911

Maintenance Issues: Call 252-466-3482

FOR MORE INFORMATION ON OUR TRAILS



READY CHERRY POINT



WILSON TRAILHEAD

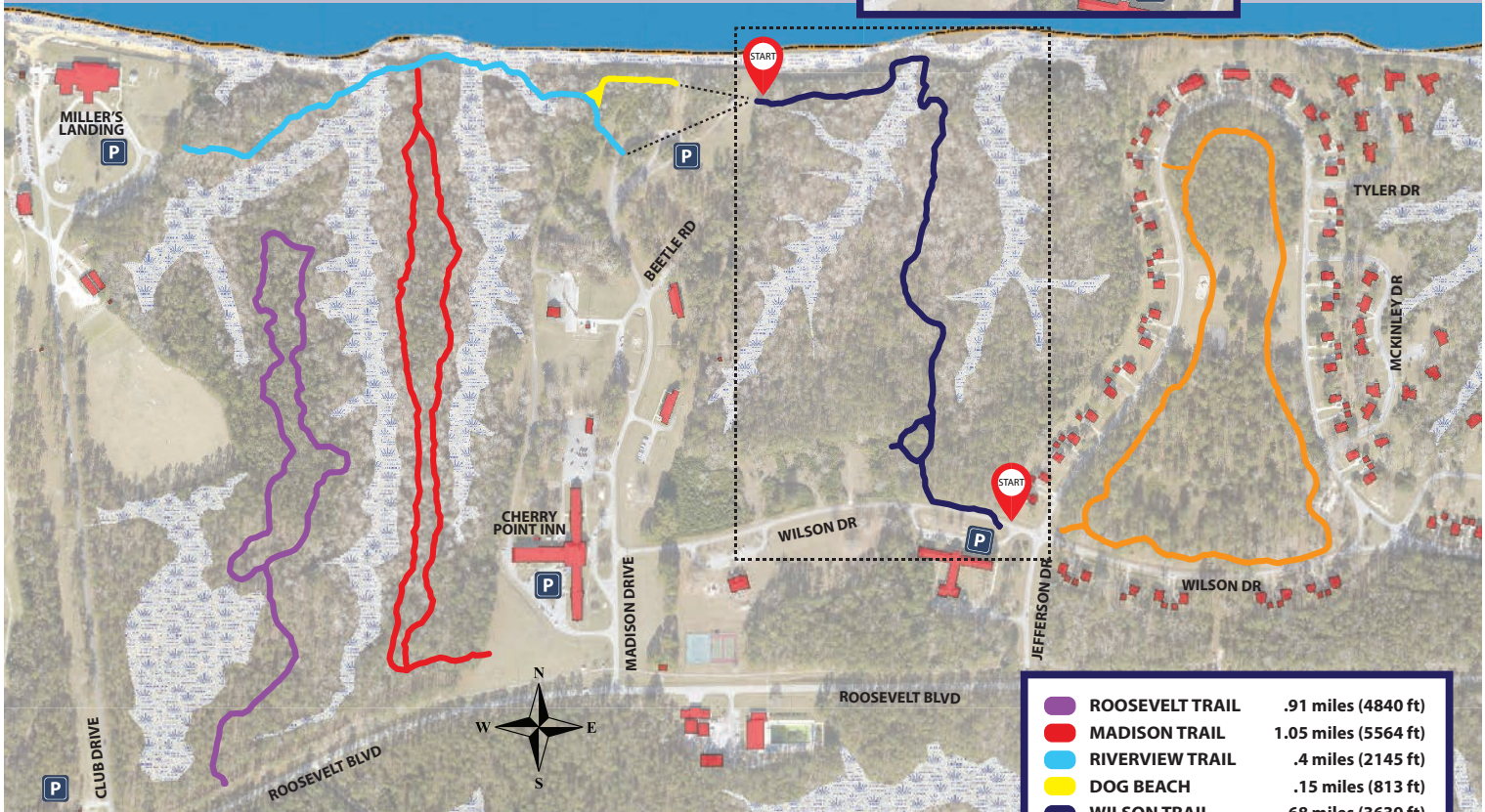
.68 miles of level mulched terrain that leads to Dog Beach
Connects to all trails except Roosevelt



Brought to you by MCCS & Public Works



YOU ARE HERE



	ROOSEVELT TRAIL	.91 miles (4840 ft)
	MADISON TRAIL	1.05 miles (5564 ft)
	RIVERVIEW TRAIL	.4 miles (2145 ft)
	DOG BEACH	.15 miles (813 ft)
	WILSON TRAIL	.68 miles (3639 ft)
	JEFFERSON LOOP	.95 miles (5010 ft)

CHERRY POINT TRAIL SYSTEM

Emergencies: Call 911
Maintenance Issues: Call 252-466-3482

FOR MORE INFORMATION ON OUR TRAILS



READY CHERRY POINT